

NORTH YORKSHIRE COUNTY COUNCIL  
YOUNG PEOPLE OVERVIEW & SCRUTINY COMMITTEE

25 JANUARY 2008

**MONITORING PUPIL NUMBERS**

1.0 PURPOSE OF THE REPORT

- 1.1 The report details the future trends in the number of pupils in North Yorkshire schools and considers the implications for school funding.

2.0 PUPIL NUMBERS

The trends in pupil numbers are summarised below:

2.1 Primary

There have been several years of declining numbers. The projection is that pupils will be at their lowest in 2010/11. During the period to 2010/11 the rate of decrease will slacken. After 2010/11 numbers are expected to rise moderately until 2014/15. The projection (very tentative) is that numbers will again fall beyond 2015. The difference in maximum & minimum numbers over the period is less than 900 pupils (2% change). This should be contrasted with reduction from 44,000 pupils in 2003/04 to less than 41,000 (7%) in 2007/08.

Further details are provided in **Appendix 1**:

- detailed forecasts from 2007/08 to 2011/12 including area based information
- a graph of the trend for this period & forward projections beyond

2.2 Secondary

Since 2003/04, after many years of increase, numbers have declined slowly. This trend will continue, at varying rates in individual years, for a decade to 2015/16. The projections beyond 2010 are more certain than the equivalent projections for Primary Schools. These projections exclude sixth forms which are currently LSC funded. The reduction over the period from 2007/08 to 2015/16 is more significant than the changes in primary – a reduction of over 2000 (6%).

Further details are provided in **Appendix 2**:

- detailed school by school forecasts to 2019/20
- graphs of the trend from 2007/08 – 2011/12 & forward projections beyond

3.0 SCHOOL FUNDING

- 3.1 School funding is funded entirely by government grant known as Dedicated Schools Grant. These arrangements were introduced in 2006/07 with DSG replacing the former arrangement where the Schools Block, along with most NYCC services, is funded by a general government grant known as Revenue Support Grant and the Council Tax.

- 3.2 The Schools Block covers not only spending by schools on their delegated budgets but also a non-delegated “central expenditure” on special needs, behaviour support, admissions and early years. The DSG awarded to North Yorkshire in 2007/08 was

£299.9M. Delegated School Budgets (known as Individual School Budgets – ISB) in 2007/08 amounted to £267.2M, representing 89% of the DSG available.

- 3.3 We have recently received details of the DSG Funding Settlement for the next 3 years, 2008/09 – 2010/11. DSG is actually fixed as an amount per pupil. North Yorkshire’s allocations are determined by reference to estimated pupil numbers for 2008/09 – 2010/11 but the actual grant awarded will, for each year, be adjusted retrospectively to reflect actual pupil numbers based upon a count taken each January. Whilst the announcement of a settlement for the 3 year period is clearly helpful for forward planning the retrospective adjustment, to reflect actual pupil numbers, is a complication which makes budget planning more challenging. Incidentally DSG funding also covers 3 & 4 year old pupils in Early Years Private and Voluntary Providers and details of pupils educated other than in our schools.
- 3.4 Each year, following consultations with schools and the Schools Forum, a medium term financial strategy is prepared which fixes the budget for the following 3 years. This process involves the allocation of budgets for the non-delegated services as well as determining the total amount available for distribution to schools. The amount distributed to schools is shared by a formula – the Local Management for Schools (LMS) formula.
- 3.5 The LMS formula, which is subject to regular review to reflect change in circumstances and priorities, is determined locally by the authority, again after consultation with schools and the Schools Forum. However the “rules” regarding the formula are heavily prescribed by the Department for Children, Schools & Families (DCSF). One key requirement is that at least 80% of resources are distributed according to pupil numbers. Consequently changes in pupil numbers do have a significant affect on the budgets for individual schools.
- 3.6 The LMS ‘funding rules’ require that funding for the following financial year is based upon numbers in the January prior to the financial year concerned, e.g. numbers in January 2008 will determine 2008/09 school budgets. The pupil numbers used for funding purposes for the current year (Jan 2007 pupils used for 2007/08 budgets) are compared below with the figures for the following 3 years. This is the period 2008/09 – 2010/11 which forms the period for 3 year budgets which are about to be fixed.

	Primary 5 – 10	Secondary 11 – 16	Total	Change
Jan 2007	41,903	35,929	77,832	
Jan 2008	41,485	35,433	76,918	- 914
Jan 2009	41,247	34,850	76,097	- 821
Jan 2010	41,025	34,387	75,412	- 685

The DSG made available to the authority & individual school budgets will be adjusted each year to reflect actual pupil numbers – rather than the estimates detailed above.

- 3.7 Members will note the interaction between the manner in which DSG is distributed (based entirely on pupil numbers) and the manner in which school funding is determined where around 80% of resources are distributed according to pupil numbers. Consequently in relation to the overall Schools Block budget a reduction in pupils gives rise to a greater loss in the available resources (DSG) than can be “recovered” by the impact of reduced budget demands from schools as a consequence of that reduction in pupils. Put another way this represents some of the diseconomies of scale which arise both for schools and the Authority as pupil numbers fall. In considering these diseconomies of scale it is important to note that there should be opportunities to make equivalent savings on that part of resources not distributed according to pupil numbers as, for example, if there is a 2% reduction in overall pupil numbers is there not an equivalent 2% reduction in the number of pupils requiring special needs? On the other hand other costs are clearly relatively fixed

such as the cost of a headteacher and, certainly for marginal reduction in pupil numbers, premises costs.

- 3.8 Details are provided in **Appendix 3** of pupil numbers which are ‘funded’ in 2007/08 analysed by year groups together with the associated costs. The methodology used for pupil funding is slightly different from that used in the forecasts. Pupil funding is based entirely on the numbers in school in January e.g. January 2007 pupils determine 2007/08 funding.
- 3.9 In considering the impact of pupil numbers on individual schools it is important to note that the LMS formula is currently designed to be “fair” to all types and sizes of school. One feature of the formula for school funding is that for small schools there is a lump sum paid to the school in addition to the funding made available on a per pupil basis. Thus for example a primary school with 80 pupils currently receives a lump sum of £46,229 in addition to its pupil-led funding, whereas a school with 30 pupils would receive a greater lump sum of £62170.
- 3.10 The impact of this arrangement is that as pupil numbers in an individual school reduce there is some increase in the lump sum to compensate the school for that reduction in pupil numbers. That of course does not mean that the school will not have to make staffing changes to reflect its pupil number changes. However the formula is designed to be just as fair, in providing resources which satisfactorily meet the needs of the school concerned, whatever the number of pupils.
- 3.11 The challenge for schools with declining rolls is not that it is impossible to manage their resources based upon their revised pupil numbers but more making sure that they make the appropriate changes, at the right time, in staffing and other costs to reflect the change in pupil numbers. Clearly when these changes are sudden there is the possibility, even with good pre-planning, that some redundancies are required. The pre-planning for these changes is actively encouraged by the authority by a requirement that all schools prepare 3 year budgets based upon their own realistic assessment of changes in pupil numbers. These budgets in the majority of cases are prepared in conjunction with the Financial Management for Schools Team who not only assist schools in their work but also give early warning of potential difficulties not only to the individual school concerned but to colleagues within the Authority. This intelligence, supplemented by the Personnel Advisory Service, Q&I Advisers including School Improvement Partners and the Internal Audit Service, should enable schools to have all the necessary guidance and support needed.
- 3.12 One particular initiative which is particularly useful to schools is the development, by the FMS Service, of comparative statistics. This means that a school can readily refer to information to seek comparators with similar schools. This is particularly useful for a school say with 150 pupils to not only compare its organisation and costs with similar schools with 150 pupils but also to examine, if its pupil numbers were to reduce to 130 pupils, the costings and organisation of schools of that size.
- 3.13 Primary School rolls have been declining for a number of years and whilst many schools have faced difficulties they do seem to largely have been addressed successfully in that at the end of each financial year the number of schools with deficits has been relatively small. Indeed deficit budgets are a more significant feature of Secondary Schools where declining rolls are not yet a significant feature.

Sector	As at March 2007	Estimated as at March 2008
Primary schools in deficit	4	9
Secondary Schools in deficit	5	8
Special Schools in deficit	1	0

As indicated in the information in the previous section of the report falling rolls are becoming an increasingly important factor in Secondary Schools and it will add to other challenges faced to the secondary schools associated with expanding the curriculum with the greater number of vocational subjects.

4.0 RECOMMENDATIONS

4.1 The Overview & Scrutiny Committee is asked to note the information provided regarding trends in pupil numbers and the associated funding issues.

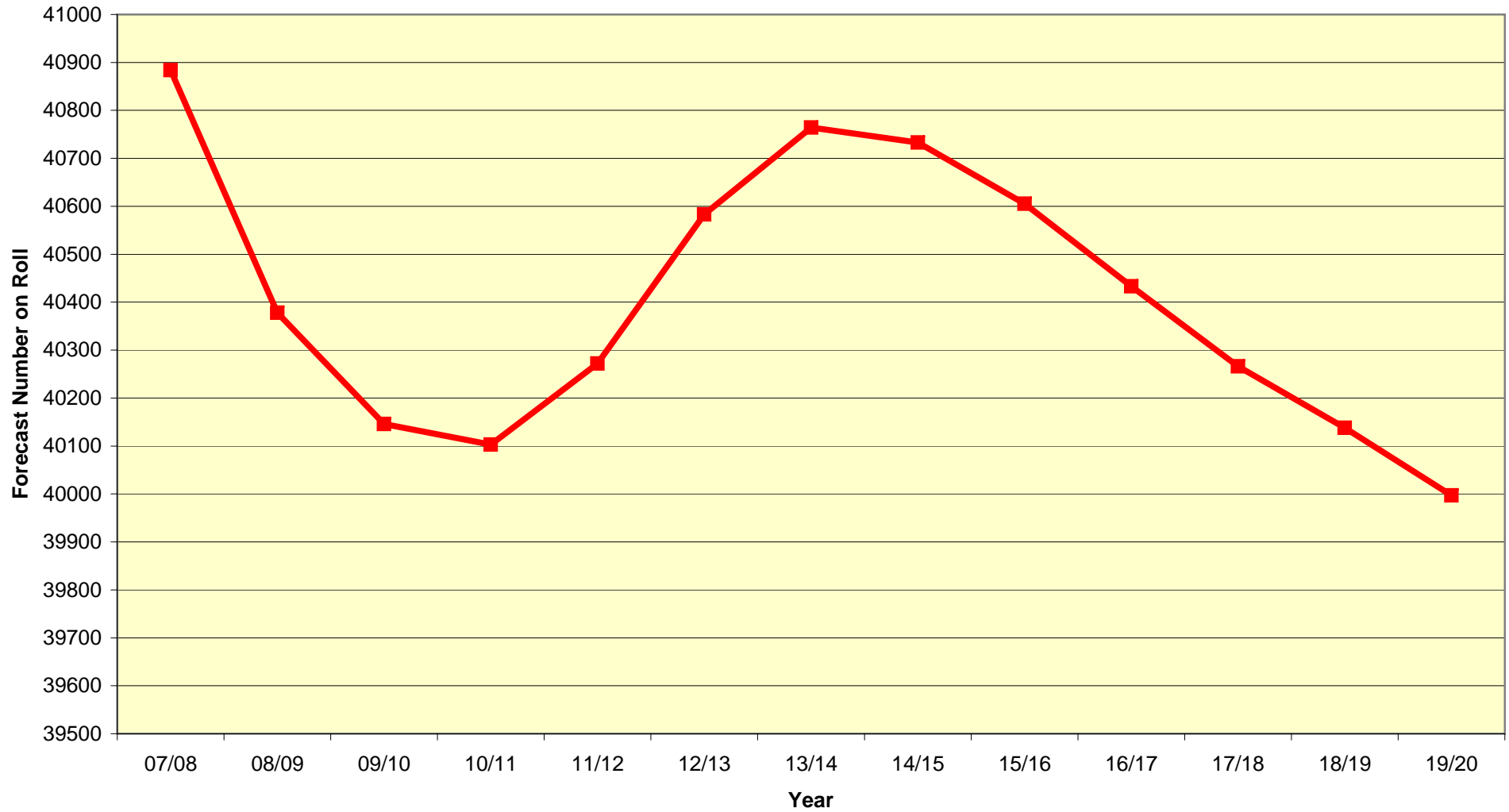
CYNTHIA WELBOURN  
CORPORATE DIRECTOR – CHILDREN & YOUNG PEOPLE'S SERVICE  
County Hall  
NORTHALLERTON

Author: George Bateman, Assistant Director – Finance & Management Support, ext. 2118

Primary Forecasts

Primary forecasts																
Forecast as at May 2007																
ISM Area	Forecast NOR 2007 (based on Sept 2004 NOR)	Actual NOR 2007 - May	07/08	08/09	09/10	10/11	11/12	12/13	13/14	14/15	15/16	16/17	17/18	18/19	19/20	
Knaresborough	Central Vale	1414	1474	1428	1394	1374	1358	1354	1368	1363	1369	1359	1352	1346	1340	1336
Selby	Central Vale	4081	4028	3999	3956	3905	3902	3954	3973	3995	4015	4015	4008	4006	4007	4007
Sherburn & Tadcaster	Central Vale	2161	2034	2024	2002	1993	1992	2017	2040	2040	2048	2048	2044	2040	2040	2040
Boroughbridge	Central Vale	951	878	892	891	891	897	894	915	901	900	898	896	893	890	888
Central Ryedale	White Horse	1779	1725	1724	1695	1661	1645	1660	1666	1696	1689	1678	1667	1656	1645	1635
North Ryedale	White Horse	1374	1413	1391	1377	1401	1412	1433	1451	1467	1466	1456	1445	1434	1426	1390
Easingwold & Rural	White Horse	1194	1222	1229	1218	1216	1198	1190	1182	1189	1178	1170	1162	1154	1146	1138
Thirsk & Rural	White Horse	1257	1265	1260	1260	1265	1248	1244	1234	1257	1245	1235	1225	1215	1205	1198
Mid Craven	Craven	2058	2121	2056	2025	1955	1961	1968	1976	1993	1998	1984	1970	1956	1942	1928
North Craven	Craven	861	844	833	819	803	813	804	822	823	817	811	804	799	796	754
South Craven	Craven	947	991	994	992	1012	1016	1012	1017	1031	1034	1028	1022	1016	1010	1009
Harrogate & Rural	Harrogate	6428	6383	6221	6113	6078	6059	6090	6137	6131	6131	6118	6094	6073	6056	6054
Ripon & Rural	Harrogate	1733	1753	1703	1647	1631	1635	1634	1641	1645	1644	1640	1635	1631	1628	1628
Bedale & Rural	North	1107	1048	1038	1025	1034	1043	1052	1061	1061	1056	1053	1049	1045	1041	1037
Catterick	North	1560	1491	1523	1583	1634	1693	1754	1792	1839	1864	1880	1889	1901	1913	1753
Northallerton & Rural	North	1760	1800	1748	1751	1742	1739	1731	1747	1755	1739	1723	1709	1694	1680	1666
Wensleydale	North	593	635	628	634	639	643	656	667	673	681	683	684	686	692	698
Swaledale	North	1475	1603	1599	1598	1603	1591	1611	1634	1664	1683	1694	1702	1713	1723	1731
Stokesley & Rural	North	1227	1205	1168	1129	1115	1099	1105	1116	1109	1098	1090	1082	1074	1067	1060
Scarborough	Coast	5181	5131	5073	4966	4959	4922	4883	4901	4886	4846	4821	4788	4747	4718	4889
Filey	Coast	847	872	849	838	830	824	831	850	838	832	828	824	818	814	810
Whitby & Rural	Coast	1757	1682	1504	1465	1405	1413	1395	1393	1408	1400	1393	1382	1369	1359	1348
<b>TOTAL</b>		<b>41745</b>	<b>41598</b>	<b>40884</b>	<b>40378</b>	<b>40146</b>	<b>40103</b>	<b>40272</b>	<b>40583</b>	<b>40764</b>	<b>40733</b>	<b>40605</b>	<b>40433</b>	<b>40266</b>	<b>40138</b>	<b>39997</b>

### Total Primary Forecast (using MAY 2007 NOR)



Secondary School Forecasts

Secondary forecasts			Actual	Forecast											
	ISM Area	Actual 2007/08	breacast 2008/09	breacast 2009/10	breacast 2010/2011	breacast 2011/2012	breacast 2012/2013	breacast 2013/2014	breacast 2014/2015	breacast 2015/2016	breacast 2016/2017	breacast 2017/2018	breacast 2018/2019	breacast 2019/2020	
4221	Boroughbridge High School	Central Vale	710	708	706	680	683	642	641	622	611	603	612	607	615
4202	King James' School	Central Vale	1360	1352	1337	1335	1309	1262	1253	1242	1229	1228	1243	1248	1250
4232	Barlby High School	Central Vale	718	739	737	716	753	753	736	752	757	756	759	769	777
4224	Brayton College	Central Vale	1004	970	948	869	937	988	961	923	913	923	932	940	948
4610	Holy Family Catholic High School	Central Vale	449	440	463	441	431	419	412	374	384	387	381	387	391
4225	Selby High School	Central Vale	880	893	932	903	946	948	942	905	884	903	916	917	926
4216	Sherburn High School	Central Vale	741	712	702	666	646	656	632	625	624	628	634	649	656
4211	Tadcaster Grammar School	Central Vale	1308	1293	1296	1303	1275	1255	1262	1243	1237	1264	1282	1267	1278
4059	Caedmon School	Coast	490	474	488	468	482	472	456	447	434	460	458	459	457
4041	Eskdale School	Coast	297	199	303	273	252	206	204	203	215	212	212	212	212
4150	Filey School	Coast	842	823	813	799	804	758	756	745	729	724	741	723	720
4069	George Pindar Community Sports	Coast	880	894	875	843	840	790	757	779	783	771	798	799	794
4070	Graham School	Coast	1310	1330	1315	1310	1297	1278	1245	1244	1226	1221	1229	1227	1220
4071	Raincliffe School	Coast	380	285	225	206	215	212	206	206	202	201	203	203	201
4073	Scalby School	Coast	989	979	957	937	938	927	902	902	889	885	891	890	884
4604	St Augustine's Roman Catholic Sch	Coast	494	526	559	589	618	641	635	626	607	598	590	596	592
4039	Whitby Community College	Coast	523	491	493	486	477	493	455	412	416	378	384	405	401
4208	Aireville School	Craven	637	622	616	599	580	561	542	517	526	534	538	549	553
4608	Ermysted's Grammar School	Craven	549	555	553	541	522	514	499	481	484	491	495	505	508
4201	Ingleton Middle School	Craven	148	167	180	165	175	163	164	162	174	178	178	176	173
4205	Settle College	Craven	298	278	247	258	286	292	303	281	273	267	251	269	278
4220	Settle Middle School	Craven	258	277	281	275	275	258	260	256	262	268	268	266	262
4518	Skipton Girls' High School	Craven	561	589	558	553	537	520	505	491	494	502	505	515	519
4210	South Craven School	Craven	1395	1389	1369	1334	1335	1340	1329	1326	1326	1326	1326	1327	1340
4206	Upper Wharfedale School	Craven	286	289	299	324	327	331	328	320	312	318	321	327	329
4200	Harrogate Grammar School	Harrogate	1296	1295	1277	1255	1231	1184	1163	1152	1148	1152	1172	1172	1175
4219	Harrogate High School	Harrogate	848	784	764	739	710	702	690	683	680	683	695	695	697
4223	Nidderdale High School & Commu	Harrogate	454	465	446	460	435	423	390	390	358	368	358	366	366
4203	Ripon College	Harrogate	539	525	495	468	470	470	450	446	450	451	455	458	459
4215	Ripon Grammar School	Harrogate	599	576	565	546	527	502	487	478	474	475	480	485	487
4217	Rossett School	Harrogate	1172	1168	1145	1118	1108	1039	1020	1010	1007	1010	1028	1029	1031
4611	St Aidan's Church of England High	Harrogate	1212	1200	1179	1158	1130	1088	1079	1068	1065	1068	1086	1087	1090
4609	St John Fisher Catholic High Scho	Harrogate	1019	1017	1013	1000	994	979	974	971	985	990	990	996	998
4074	Allertonshire School	North	699	693	700	658	680	650	630	619	635	652	648	648	645
4052	Bedale High School	North	850	839	796	743	715	694	672	680	686	691	701	706	701
4503	Northallerton College	North	531	489	462	488	477	454	453	450	430	399	419	435	431
4047	Stokesley School	North	1068	1049	1025	1019	958	898	859	851	836	836	850	853	848
4076	Richmond School	North	1220	1238	1257	1301	1320	1359	1371	1393	1396	1432	1443	1474	1494
4004	Risedale Community College	North	520	494	488	469	476	467	467	477	498	525	540	562	573
4605	St Francis Xavier School	North	418	420	422	423	434	418	409	408	403	401	409	423	430
4075	Wensleydale School	North	454	460	456	461	453	453	453	454	454	460	460	460	460

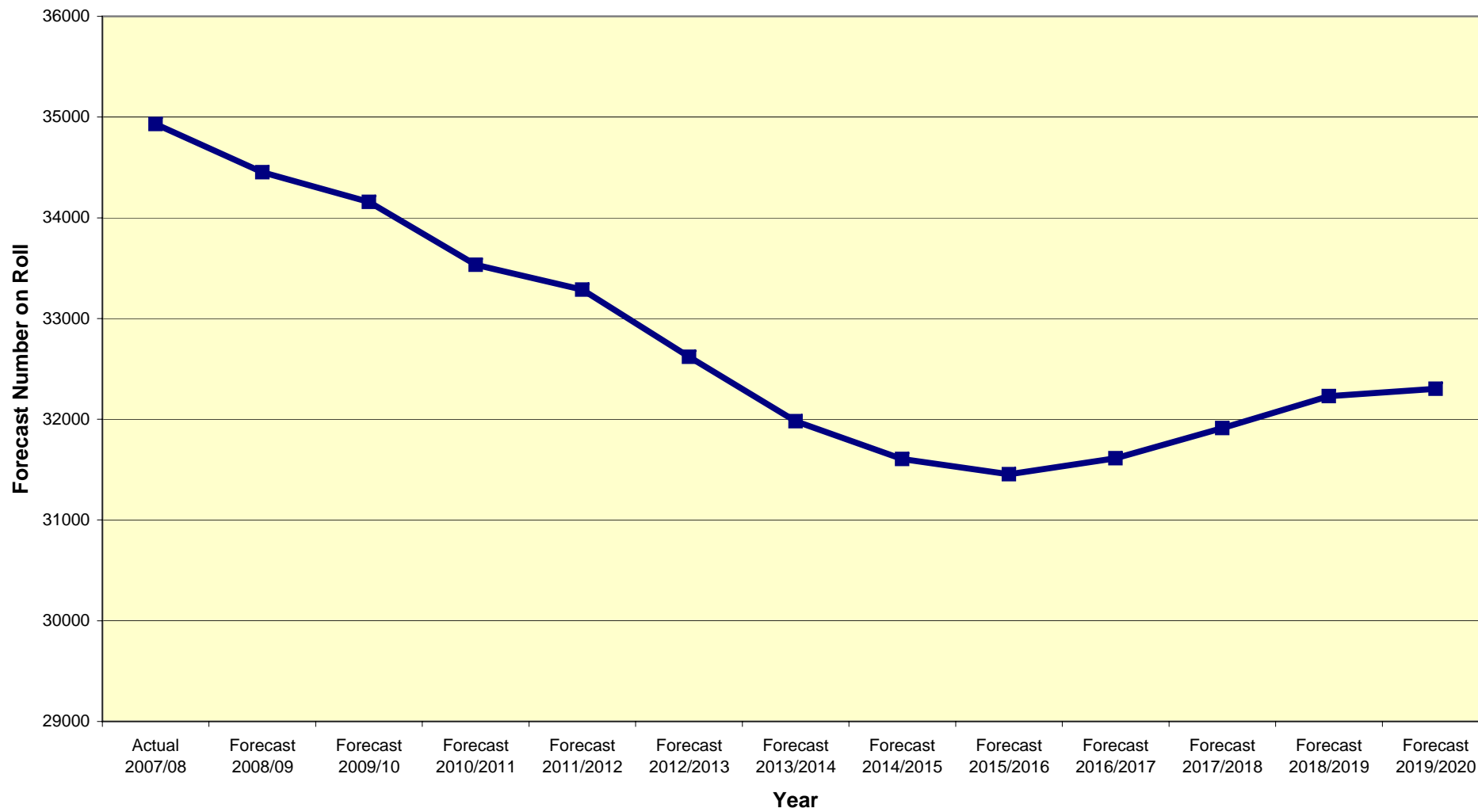
Secondary School Forecasts

APPENDIX 2

4005	Easingwold School	White Horse	1044	1042	1041	1043	1038	1038	1062	1042	1032	1024	1017	1032	1025	
4035	Thirsk School	White Horse	922	871	840	836	811	807	781	786	765	767	768	798	792	
4054	Lady Lumley's School	White Horse	767	765	769	738	711	682	634	638	661	685	697	723	723	
4077	Malton School	White Horse	560	567	569	553	533	540	513	501	508	511	511	532	531	
4152	Norton College	White Horse	633	634	633	636	610	595	551	529	504	513	526	544	544	
4022	Ryedale School	White Horse	598	586	563	549	526	499	488	495	489	494	512	519	519	
	TOTAL		34930	34451	34157	33534	33287	32620	31981	31605	31455	31613	31912	32229	32303	



### Secondary Forecast Pupils excluding 6th Form (using SEPT NOR data)



## SECTION 52 BUDGET STATEMENT 2007-2008

National Curriculum Year	Primary	Secondary	Total	Funding Per Pupil £	Primary £	Secondary £	Total £
<b>Approved Nursery</b>							
Places	1,554.58		<b>1,554.58</b>	<b>3,134</b>	4,872,054	0	<b>4,872,054</b>
<b>Pre-Reception</b>							
4 Year olds	54.33	0	<b>54.33</b>	<b>1,569</b>	85,249	0	<b>85,249</b>
<b>Main School</b>							
Reception	5,569	0	<b>5,569</b>	<b>2,017</b>	11,232,673	0	<b>11,232,673</b>
Year 1	5579	0	<b>5,579</b>	<b>2,017</b>	11,251,835	0	<b>11,251,835</b>
Year 2	5746	0	<b>5,746</b>	<b>2,017</b>	11,589,682	0	<b>11,589,682</b>
Year 3	5983	0	<b>5,983</b>	<b>1,928</b>	11,535,224	0	<b>11,535,224</b>
Year 4	6125	0	<b>6,125</b>	<b>1,928</b>	11,809,000	0	<b>11,809,000</b>
Year 5	6370	0	<b>6,370</b>	<b>1,928</b>	12,281,360	0	<b>12,281,360</b>
Year 6	6163	147	<b>6,310</b>	<b>1,928</b>	11,882,264	283,416	<b>12,165,680</b>
Year 7	0	6,767	<b>6,767</b>	<b>2,555</b>	0	17,289,685	<b>17,289,685</b>
Year 8	0	6,972	<b>6,972</b>	<b>2,577</b>	0	17,966,844	<b>17,966,844</b>
Year 9	0	7,017	<b>7,017</b>	<b>2,707</b>	0	18,995,019	<b>18,995,019</b>
Year 10	0	7,337	<b>7,337</b>	<b>3,002</b>	0	22,024,173	<b>22,024,173</b>
Year 11	0	7,206	<b>7,206</b>	<b>3,324</b>	0	23,952,744	<b>23,952,744</b>
<b>Total Main School</b>	<b>41,535</b>	<b>35,446</b>	<b>76,980</b>		<b>81,582,038</b>	<b>100,511,881</b>	<b>187,051,222</b>
Year 12		3333	<b>3,333</b>	N/A			
Year 13		2679	<b>2,679</b>	N/A			
Year 14		24	<b>24</b>				
<b>Total Post Sixteen</b>		<b>6036</b>	<b>6,036</b>		<b>LSC funding</b>	<b>30,209,363</b>	<b>30,209,363</b>
<b>School size related Lump Sums</b>					<b>12,352,879</b>	<b>2,526,109</b>	<b>14,878,988</b>